

IVC Mouse Cage System

Main Machine



Features:

- * IVC mouse cage system is composed of three parts: cage box, cage frame and main machine.
- * PLC or MCU control, inlet and exhaust fans are well-known domestic brands, stable and reliable operation.
- * With high-precision wind speed pressure difference sensor, temperature and humidity sensor.
- * Built-in UPS, the fan continues working when the external power supply interrupted.
- * With filter timing function to remind users to update the filter.
- * With abnormal parameters alarm, filter life alarm, power failure alarm.
- * Supporting remote monitoring through computer or mobile phone(PLC).

Main Machine Technical Parameters:

Ventilation Rate	10~85 times/h
Airflow Velocity	≤0.1m/s
Air Cleanliness	ISO Level 5
Noise	≤55dB
Colony Number	0
Pressure Difference	≥10pa
Power Supply	110~220V, 50/60Hz
External Size	470*605*1550mm
Package Size	570*705*1700mm
Gross Weight	105kg

Cage Frame



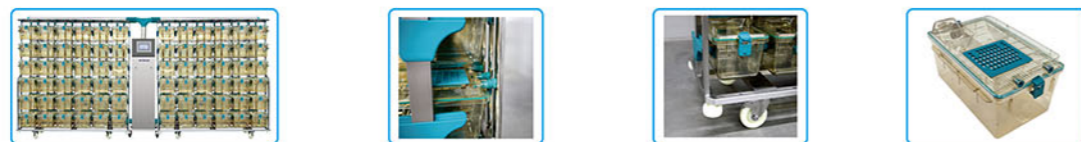
- * Cage frame material is SUS304 stainless steel.
- * The gas pipe and the cage box are connected by a silicone gas nozzle. The inlet and exhaust vents of the cage box and cage frame adopt non-invasive structure.
- * Inlet and exhaust duct can be disassembled for easy cleaning and disinfection.
- * 4 inch PU wear-resistant universal wheel, no scratching PVC floor, flexible movement without noise. The arc angle structure prevents the damage of the during handling.
- * The vertical and horizontal positions of the cage frame are numbered with letters such as A, B, C and numbers such as 1, 2, 3, which is convenient for experiment management.
- * The cage guide rail is made of ABS engineering plastic, and with instructions for cage installation in place (if not in place, there are light instructions to remind the operator).

Cage Box



- * The cage box is composed of plastic base box, box cover, stainless steel mesh cover, drinking bottle and record card. The box cover has exhaust valve, silicone sealing circle and hasp.
- * Base box and cover are molded by PPSU or PSU plastic. PPSU thermal deformation temperature>180°C, steam sterilization for more than 500 times without deformation on condition that 205 kPa, 134°C, 5min. Thermal deformation temperature of PSU material> 150°C, steam sterilization over 200 times without deformation on condition that 205 kPa, 134°C, 5min.
- * The cage box and 500ml drinking bottle are autoclavable.
- * The box cover exhaust outlet is provided with a metal filter (25*50mm) to prevent the dust in the cage from being inhaled the cage frame and blocking the pipeline.
- * The ventilated window is directly connected to the outside world, covered with 0.2μm high efficiency filter membrane, which can be directly washed and autoclavable.
- * After the cage box is removed from the cage frame, the air inlet and exhaust valves of the cage box will automatically close immediately.

Rat IVC Cage System



Introduction:

The rat IVC cage system is composed of intelligent main machine, cage frame, cage box and other parts. It is suitable for feeding and experiment of clean grade or SPF grade less harmful infected rats, especially suitable for raising immunodeficient and transgenic animals, to effectively ensure the safety of operators, animals and the environment.

Technical Parameters:

Model	Cage Number	Cage Frame Size (L*W*H)	Cage Box Size (L*W*H)	Cage Internal Height	Cage Frame & Cage Box Package Size(mm)	Cage Frame & Cage Box Gross Weight
BK-SL500-24 (4*6)	24	1186*540*1945mm	500*274*226mm	≤180mm	1286*640*2095mm	60kg
BK-SL500-30 (5*6)	30	1475*540*1945mm	500*274*226mm	≤180mm	1575*640*2095mm	71kg
BK-SL500-36 (6*6)	36	1764*540*1945mm	500*274*226mm	≤180mm	1864*640*2095mm	82kg

Guinea-pig IVC Cage System



Technical Parameters:

Model	Cage Number	Cage Frame Size (L*W*H)	Cage Box Size (L*W*H)	Cage Frame & Cage Box Package Size(mm)	Cage Frame & Cage Box Gross Weight
BK-SL520-16 (4*4)	16	1638*580*1476mm	520*385*415mm	1738*680*1626mm	72kg
BK-SL520-20 (4*5)	20	1638*580*1781mm	520*385*415mm	1738*680*1931mm	84kg

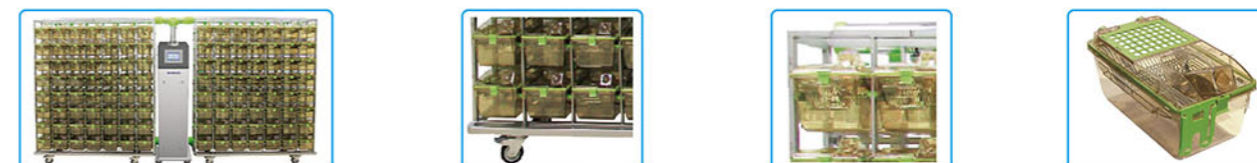
Mouse IVC Cage System(Intensive Type)



Technical Parameters:

Model	Cage Number	Cage Frame Size (L*W*H)	Cage Box Size (L*W*H)	Cage Frame & Cage Box Package Size(mm)	Cage Frame & Cage Box Gross Weight
BK-SL380-60 (6*10)	60	1346*500*1990mm	380*204*162mm	1446*600*2140mm	90kg
BK-SL380-70 (7*10)	70	1562*500*1990mm	380*204*162mm	1662*600*2140mm	100kg
BK-SL380-80 (8*10)	80	1778*500*1990mm	380*204*162mm	1878*600*2140mm	106kg
BK-SL380-90 (9*10)	90	1994*500*1990mm	380*204*162mm	2094*600*2140mm	114kg
BK-SL380-120 (6*10)-SM	120	1346*710*1990mm	380*204*162mm	1446*810*2140mm	100kg
BK-SL380-140 (7*10)-SM	140	1562*710*1990mm	380*204*162mm	1662*810*2140mm	120kg
BK-SL380-160 (8*10)-SM	160	1778*710*1990mm	380*204*162mm	1878*810*2140mm	130kg
BK-SL380-180 (9*10)-SM	180	1994*710*1990mm	380*204*162mm	2094*810*2140mm	140kg

Mouse IVC Cage System



Introduction:

It is composed of intelligent main machine, cage frame, cage box and so on. It is suitable for feeding and experiment of clean grade or SPF grade less harmful infected mice, to effectively ensure the safety of operators, animals and the environment.

Technical Parameters:

Model	Cage Number	Cage Frame Size (L*W*H)	Cage Box Size (L*W*H)	Cage Frame & Cage Box Package Size(mm)	Cage Frame & Cage Box Gross Weight
BK-SL385-32 (4*8)	32	890*500*1960mm	385*194*172mm	990*600*2110mm	68kg
BK-SL385-36 (4*9)	36	890*500*2020mm	385*194*172mm	990*600*2170mm	73kg
BK-SL385-40 (5*8)	40	1100*500*1960mm	385*194*172mm	1200*600*2110mm	77kg
BK-SL385-45 (5*9)	45	1100*500*2020mm	385*194*172mm	1200*600*2170mm	82kg
BK-SL385-48 (6*8)	48	1310*500*1960mm	385*194*172mm	1410*600*2110mm	85kg
BK-SL385-54 (6*9)	54	1310*500*2020mm	385*194*172mm	1410*600*2170mm	90kg
BK-SL385-56 (7*8)	56	1520*500*1960mm	385*194*172mm	1620*600*2110mm	90kg
BK-SL385-63 (7*9)	63	1520*500*2020mm	385*194*172mm	1620*600*2170mm	95kg
BK-SL385-64 (8*8)	64	1730*500*1960mm	385*194*172mm	1830*600*2110mm	100kg
BK-SL385-72 (8*9)	72	1730*500*2020mm	385*194*172mm	1830*600*2170mm	105kg
BK-SL385-72 (9*8)	72	1940*500*1960mm	385*194*172mm	2040*600*2110mm	105kg
BK-SL385-81 (9*9)	81	1940*500*2020mm	385*194*172mm	2040*600*2170mm	110kg
BK-SL385-96 (6*8)-SM	96	1310*710*1960mm	385*194*172mm	1410*810*2110mm	105kg
BK-SL385-108 (6*9)-SM	108	1310*710*2020mm	385*194*172mm	1410*810*2170mm	115kg
BK-SL385-112 (7*8)-SM	112	1520*710*1960mm	385*194*172mm	1620*810*2110mm	115kg
BK-SL385-126 (7*9)-SM	126	1520*710*2020mm	385*194*172mm	1620*810*2170mm	125kg
BK-SL385-128 (8*8)-SM	128	1730*710*1960mm	385*194*172mm	1830*810*2110mm	126kg
BK-SL385-144 (8*9)-SM	144	1730*710*2020mm	385*194*172mm	1830*810*2170mm	136kg
BK-SL385-144 (9*8)-SM	144	1940*710*1960mm	385*194*172mm	2040*810*2110mm	146kg

Rabbit IVC Cage System



Technical Parameters:

Model	Cage Number	Cage Frame Size (L*W*H)	Cage Box Size (L*W*H)	Cage Frame & Cage Box Package Size(mm)	Cage Frame & Cage Box Gross Weight
BK-TL520-12 (3*4)	12	1236*580*2026mm	520*389*270mm	1336*680*2176mm	63kg
BK-TL520-16 (4*4)	16	1638*580*2026mm	520*389*270mm	1738*680*2176mm	80kg